

# Waiheke Island

WESTERN

# EXPLORER

HOP-ON HOP-OFF



**40**  
MINUTE  
FERRY RIDE

**15**  
CONVENIENT  
STOPS

**80**  
MINUTE  
LOOP

COMMITTED TO  
SUSTAINABLE  
TOURISM

QUAL  
MARK  
GOLD

LIGHT  
FOOTPRINT  
SAFE  
& SOUND  
WARM  
WELCOME

tiaki  
CARE FOR NEW ZEALAND

Fullers360

## Walk the island



### 1 Oneroa Village to Matiatia Ferry Terminal

A scenic alternative from Oneroa Village to Matiatia Ferry Terminal. This track avoids the main road and takes you through the Atawhai Whenua Reserve. This track can be muddy after rain.

Walk time: 30 minutes (one way) | Distance: 2km | Grade: Easy



### 2 Vineyards to Matiatia Ferry Terminal

Avoid the main road back to Matiatia Ferry Terminal with a scenic walk. The fastest and most direct route to the ferry terminal from Cable Bay, Mudbrick and Jurassic Ridge vineyards. This track can be muddy after rain.

Walk time: 30 minutes (one way)  
Distance: 1.1km  
Grade: Easy



### 3 Northern Hills and Oneroa Bay views

From art to coast - enjoy a loop walk to stunning Oneroa Bay. Beginning at the Waiheke Community Art Gallery, this walk will take you up to the northern hills for panoramic views of Oneroa Beach.

Walk time: 30 minutes (one way) | Distance: 2km | Grade: Easy



### 4 Onetangi Beach to Casita Miro and Obsidian Wines

A must-do beach walk ending at an iconic Spanish inspired vineyard. Beginning at Charlie Farley's in Onetangi, this walk takes you along stunning beach and up the stairs from Seventh Avenue to Seaview Road.

Walk time: 25 minutes (one way) | Distance: 1.8km | Grade: Moderate/difficult



### 5 Cascades loop track - Whakanewha Regional Park

Walk 200 gradient steps, starting at the top of the park's central track opposite Batch Winery's car park on Carsons Road. A beautiful scenic bush walk with gentle birdsong and native fauna. This track can be muddy after rain.

Walk time: 40 minutes (loop)  
Distance: 2.6km  
Grade: Moderate/difficult



Waiheke Island ferry timetable  
Scan this QR code to view current timetable.

2020  
Travelers'  
Choice  
Tripadvisor

QUAL  
MARK  
GOLD

LIGHT  
FOOTPRINT  
SAFE  
& SOUND  
WARM  
WELCOME

Save time and book online!  
Fullers.co.nz | 09 367 9111

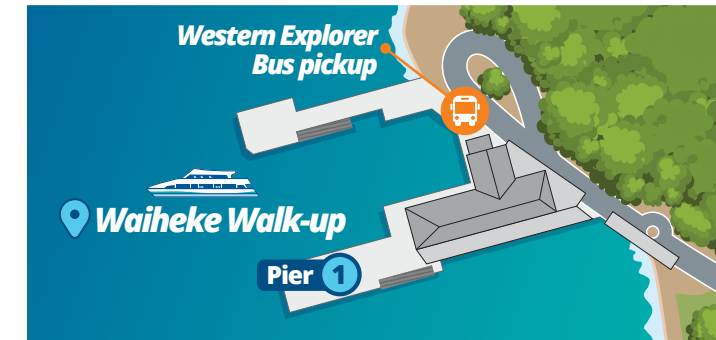


## Western Explorer Hop-On Hop-Off Bus

A flexible and cost-effective way to experience Waiheke Island. Simply hop on and hop off at the island's top spots including vineyards, beaches, seaside villages, galleries, shops and cafés.

### Tour details

- **Western Explorer Hop-On Hop-Off Bus:** Buses depart daily from Matiatia Ferry Terminal every 30 minutes. The timetable has been designed to visit key locations with 15 convenient stops. If you prefer, stay on board and enjoy a scenic 80 minute tour with your friendly driver/guide talking you through the island's history and insider tips to help plan your trip.
- **Tourist hotspots:** Discover the best spots across the island for shopping and relaxing - including Oneroa Village and the stunning Onetangi Beach.
- **Duration:** We recommend allowing at least half a day, including ferry travel to and from downtown Auckland.
- **Departure time:** Each Western Explorer Hop-On Hop-Off Bus arrives at Matiatia Ferry Terminal to meet sailings as they arrive, the first bus meets the 9am sailing from downtown Auckland. The final bus will return passengers to the ferry terminal to meet the 7pm sailing back to downtown Auckland.



### Tour pricing

- Scan the QR code below with your phone to view Western Explorer Hop-On Hop-Off Bus pricing. Or visit us online at [fullers.co.nz](http://fullers.co.nz)



Some vineyards may close from time to time. In these instances, the Western Explorer Hop-On Hop-Off Bus will not stop at these destinations. Advanced bookings are advisable for Fullers360 tours. If you are planning to dine on Waiheke Island, please book the venue in advance of travel to avoid disappointment. Arrive at the Downtown Ferry Terminal at least 30 minutes prior to ferry departure for boarding. In summer, we recommend allowing at least 60 minutes. All departures and timetables are subject to change or cancellation. Prices in this brochure are correct at time of printing and inclusive of GST, and may change without notice. All travel on Fullers360 sailings and tours is subject to our full terms and conditions of travel, available online at [fullers.co.nz](http://fullers.co.nz).

We would like to thank our partner, Waiheke Walking Trust for their help with the walking information in this brochure.



# Vineyard Explorer



Want to tick multiple Waiheke wineries off your list? Look no further than the Vineyard Explorer tour which has all the flexibility of our Western Explorer Hop-On Hop-Off Bus with added wine tastings at three of the best vineyards on Waiheke. If you are travelling with children, book a regular Western Explorer Hop-On Hop-Off Bus ticket and you've got the perfect day out for the whole family.

## Tour highlights

- ▶ The Vineyard Explorer runs daily.
- ▶ Enjoy wine tastings at Cable Bay Vineyards, Stonyridge Vineyard and Batch Winery.
- ▶ Make the most of the 15 stops on the Western Explorer Hop-On Hop-Off Bus route, visit top vineyards, popular beaches and seaside villages.
- ▶ Sail back to Auckland on any same-day return ferry. We recommend allowing a full day, including ferry travel.



### Mudbrick Vineyard and Restaurant

🚌 1

This Tuscan-inspired vineyard is well renowned for its food, wine and beautiful gardens, a popular wedding destination.

▶ (09) 372 9050  
▶ mudbrick.co.nz

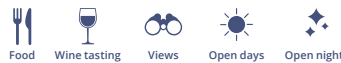


### Cable Bay Vineyards

🚌 2

With panoramic views over the Hauraki Gulf you will never want to leave Cable Bay Vineyards' modern verandah. Why not grab a sharing platter and make the most of the sun-soaked lawns.

▶ (09) 372 5889  
▶ cablebay.co.nz



### Allpress Olive Groves

🚌 2

Enjoy a tasting experience, mill tour, or just pop in to pick up your favourite Extra Virgin Olive Oil made with hand-picked Waiheke olives. Choose from three world class brands: Allpress, Rangihoua Estate and number29.

▶ (09) 372 6214  
▶ allpressolivegroves.co.nz



### Waiheke Community Art Gallery

🚌 3

Enjoy a diverse range of exhibitions from local and acclaimed artists from around New Zealand or shop for souvenirs of eclectic hand-made mementoes.

▶ (09) 372 9907  
▶ waihekeartgallery.org.nz



### The Local

🚌 4, 15

Premium fish and chip restaurant overlooking stunning Oneroa beach.

▶ (09) 372 8752  
▶ thelocalwaiheke.co.nz



### Vino Vino Restaurant and Bar

🚌 4, 15

One of Waiheke's oldest and most iconic restaurants with an Argentinian inspired menu.

▶ (09) 372 9888  
▶ vinovino.co.nz



### Goldie Estate

🚌 5, 14

The first vineyard on Waiheke, now home to the University of Auckland's wine science centre.

▶ (09) 372 7493  
▶ goldieestate.co.nz



### Kennedy Point Vineyard

🚌 5, 14

Certified organic wines nestled amongst 300-year-old pohutukawa trees. Walk 25 minutes from stops 5 or 14 to Kennedy Point Vineyard.

▶ (09) 372 5600  
▶ kennedypointvineyard.com



### Ecozip Adventures

🚌 7

Award winning adventure and eco-tourism destination. Dual flying-fox ziplines let you soar over vines side by side with a friend. Stop 7 is the local pick up point for pre-booked EcoZip tours.

▶ (09) 372 5646  
▶ ecozipadventures.co.nz



### Wild Estate/Waiheke Brewery

🚌 7, 8, 10, 11

Sample boutique food and wine or craft beer at Waiheke's first micro-brewery served with a side of lawn games, clay bird shooting and archery.

▶ (09) 372 3434  
▶ wildonwaiheke.co.nz



### Stonyridge Vineyard

🚌 7, 11

Nestled in a valley of olive trees, reminiscent of France, Stonyridge is one of the more established vineyards on Waiheke well known for Bordeaux style wines.

▶ (09) 372 8822  
▶ stonyridge.com

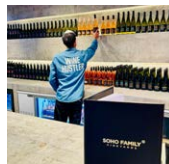


### Te Motu Vineyard

🚌 7, 8, 10, 11

Enjoy a tasting of Bordeaux-style wines at the breathtaking Te Motu. Nestled in the vines and overlooking the Onetangi Valley this is the perfect Waiheke vineyard to stop and take it all in.

▶ (09) 372 6884  
▶ temotu.co.nz



### SOHO Family Vineyard

🚌 7, 8, 10, 11

Creative and casual. Serving critically acclaimed SOHO wines and Asian fusion street food to the soundtrack of nature. Human and canine family friendly.

▶ (09) 360 5443  
▶ sohowineco.com



### Tantalus Estate and Alibi Brewery

🚌 7, 8, 10, 11

Upscale, family-owned estate vineyard and winery offering dining, tours & tastings, plus a brewery. Bookings essential.

▶ (09) 372 2625  
▶ tantalus.co.nz



### Museum of Waiheke

🚌 7, 10

Experience a slice of old Waiheke Island and learn about the heritage and history located in Onetangi. Opening hours: 11:00am - 3:00pm - Wed, Sat, Sun.

▶ (09) 372 2970  
▶ waihekemuseum.org.nz



### The Heke

🚌 8

The home of Waiheke Brewing Co's Heke Beer and the award-winning Waiheke Whisky, The Heke Kitchen serves tasty woodfired local fare. Bring the kids and enjoy the acres of beautiful gardens at this relaxed eatery.

▶ 09 372 0020  
▶ theheke.co.nz



### Onetangi Beach

🚌 9

Stunning 1.87 km north facing beach with golden sands, great for fishing, walking and swimming or relax at restaurants along the water's edge.



### Charlie Farley's

🚌 9

A Waiheke institution since 1987, New Zealand's number one beach bar perfect for families.

▶ (09) 372 4106  
▶ charliefarleys.co.nz



### Three Seven Two

🚌 9

Located in Onetangi beach with stunning sea views, cleverly named after the Waiheke phone prefix '372', with a delicate seasonal menu.

▶ (09) 372 8846  
▶ threeseventwo.co.nz



### Casita Miro Vineyard

🚌 9

Charming Spanish-inspired food and wine with sweeping water views over Onetangi beach. Walk 25 minutes from stop 9 to Casita Miro Vineyard.

▶ (09) 372 7854  
▶ casitamiro.co.nz



### Postage Stamp Wines

🚌 8

Postage Stamp is a collection of high-quality, boutique wines from Waiheke Island, sourced from small, artisan vineyards. Walk 4 minutes from stop 8 to Postage Stamp Wines.

▶ (09) 372 2712  
▶ postagestampwines.co.nz



### Batch Winery and Thomas's Bach

🚌 12

As the highest Waiheke Island winery, it's not a surprise that Batch Winery is home to spectacular views and equally as beautiful wines. The perfect place to soak it all in and enjoy a wine tasting.

▶ (09) 372 3223  
▶ batchwinery.com



### Waiheke Wings

🚌 12

ADVENTURE FROM ABOVE. Our flights offer a variety of premium experiences that can be personalised to meet your requirements. Just an 8 minute walk from Batch Winery.

▶ (09) 372 1122  
▶ waihekewings.co.nz



### Whakanewha Regional Park

🚌 12

On the southern coast of Waiheke Island this regional is perfect for sheltered swimming, campaign and picnics.





# WESTERN EXPLORER HOP-ON HOP-OFF

- From Matiatia route
- To Matiatia route
- EcoZip transfer route  
*Booking required.*
- Walking tracks  
*Suitable walking shoes required. Tracks are weather dependent.*
- Bus Stop
- Vineyard
- Shopping
- Attraction
- Craft beer
- Food
- Ferry



**3, 4, 15**

**Oneroa Village**  
Visit the heart of the island and indulge in a range of cafés, restaurants, art galleries and shops. Enjoy cocktails on the balcony at Oyster Inn, artisan gelato at Island Gelato, a glass of wine at VINO VINO or picnic with fish'n'chips at Oneroa Beach. Walk to Little Oneroa beach at low tide.

**Food:** Bars | Restaurants | Cafés | Delicatessen | Ice Cream/Gelato  
**Activities:** Swim | Walk | Shop | Art Gallery | Cinema | Accommodation



**3**

**Alison Park - Sculpture Trail**  
Located opposite the Artworks Centre on the main road to Oneroa, you will find a showcase of several stunning large sculptures that featured in past Sculpture on the Gulf exhibitions (held every two years). There are seats to sit and relax on and admire the views in a lovely garden atmosphere.

**Where:** Cnr Oceanview Road and Mako Street, Oneroa Village  
**Activities:** Walk | Art Sculptures | Park



**6, 13**

**Ostend Village**  
At the centre of the island you will find the commercial hub of Waiheke, with the local supermarket – as well as bakeries, cafes and food outlets. If you visit on a Saturday, drop by the popular Ostend markets.

**Food:** Bars | Restaurants | Cafés | Supermarket  
**Activities:** Walk | Shop | Saturday markets | Accommodation

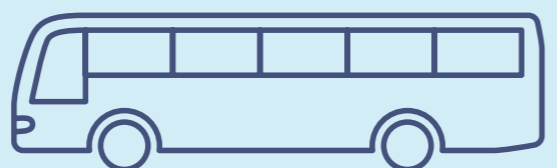


**9**

**Onetangi Beach**  
A stunning 1.87km north-facing beach with golden sands. Great for swimming, fishing and surfing when the northerly blows. Relax at restaurants on the water's edge.

**Food:** Bars | Restaurants  
**Activities:** Swim | Walk | Fish | Surf | Accommodation

**Bus timetable**



**Scan the QR code to view the current bus timetable**

**NEW FEATURE**

## TRACK YOUR EXPLORER BUS

We're excited to introduce our brand-new Western Explorer bus tracking feature, designed to make your Waiheke Island experience even better. Now you can seamlessly plan your day by checking the location of the next bus and nearby stops.

**Just scan the QR code to instantly see where your bus is on the route.**

Whether you're enjoying a little extra time at your favourite vineyard or taking a final refreshing dip in the ocean, you can relax knowing the next bus is just a tap away. Explore more of Waiheke at your own pace.

**Bus Stop 15**  
Route Towards Matiatia  
Ocean View Road / Tui Street